



THE
FABRIC
BOX™

PLEATED & SOFTCELL

THE
F A B R I C
B O X

PLEATED & SOFTCELL

The Pleated & Softcell collection encapsulates contemporary *elegance* and *practicality* with a mix of Cellular and Pleated fabrics.

The collection presents a *sophisticated* collection of delicate fabrics that create a harmonious *geometrical* form of precisely woven fabric.

FABRICS FOR EVERYDAY LIVING



Water Resistant

Ensuring each delicate fold of the Softcell collection can endure everyday living. Tribeca with its subtle design, has been manufactured with a water resistant coating presenting a stylish yet functional fabric, ideal for areas of high moisture. Available as dimout & blockout.



Fire Retardant

Coupled with blackout properties and contemporary tones, Soho boasts fire retardant properties, meeting BS 5867-2: 2008 Type B standards, providing a perfect choice for domestic or commercial blinds.



Blockout

Softcell includes a range of blackout fabrics which create a calming ambiance ideally suited for bedroom and living room decor. The silver coating on the interior of the cell ensures maximised insulation properties.



Voile

The transparent properties of Artezen, will softly filter light into the room while maintaining your connection to the outside world, perfect for use with day and night blinds.



01. | MYTHIC ECRU |

Boasting a range of fabric properties that present benefits such as water resistance and flame retardant, Softcell fabrics are perfect for any setting.





Soho blackout meets British flammability ratings, giving the additional peace of mind for fire safety within a home or contract environment.



Tribeca and Tribeca Blockout offer a water-resistant coating perfect for areas of high moisture such as kitchens and bathrooms.

THE FABRIC BOX

SOFTCELL

Offering a range of 25mm cellular fabrics, each delicately woven fabric creates a harmonious geometrical form of folded fabric layers, providing optimum light control, enhanced privacy and boasting energy efficiency properties.

Available in a range of stylish fabrics offering dimout options which will softly diffuse the light through the textured cell or turn day to night using the blackout fabrics to control the light.





| 02. | LEXINGTON DOVE GREY |

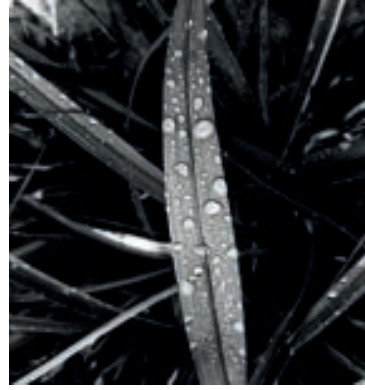


SOFTCELL



| 03. | BLENHEIM BLOCKOUT WHITE MIST |





| 04. | TRIBECA BLOCKOUT GREY DAWN |



THE FABRIC BOX

PLEATED

The 20mm pleat presents a clean and consistent aesthetic whilst injecting a new dimension of style and texture to any room.

Presenting an array of plains, textures and blockout fabrics, the pleated collection includes fabrics with a pearlised coating which optimally reflects light, contributing to energy savings. Textured weaves and delicate crushed effects add further appeal to this offering.



| 05. | NOUVEAU GREY MIST |



PLEATED





PLEATED

THE FABRIC BOX

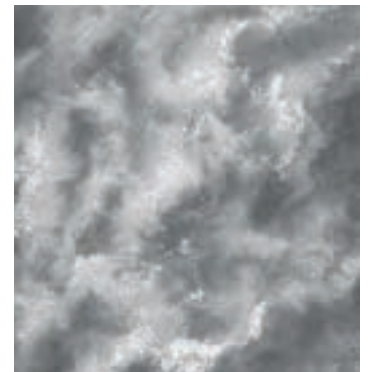
OPERATING SYSTEMS

Merging functionality and form, Softcell optimises versatility with a range of operating systems to enhance light flow and privacy.





08. | ASTORIA SLATE |



BOTTOM UP

Making light control and privacy easy; the fabric is fixed to the headrail allowing you to raise and lower to the ideal position for you. Available as free-hanging and tensioned.



TOP DOWN BOTTOM UP

This versatile operating system allows for the fabric to be placed at any point in the window, light can flow through both the top and bottom of the window whilst maintaining privacy. Available as free-hanging and tensioned.



09. | TRIBECA DIMOUT VINTAGE GREY |





DAY & NIGHT

This versatile operating system incorporates two fabrics to be placed at any point in the window. Merge Artezen voile that offers subtle light filtration during the day, with a second blackout fabric to facilitate ultimate light control. Available as free-hanging and tensioned.

10. | LEXINGTON BLOCKOUT GREY AND ARTEZEN SNOW |



THE FABRIC BOX

MOTORISED

Motorisation made simple.

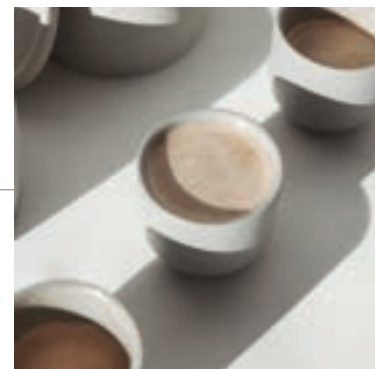
11. | MOTORISED SOHO FLINT (FR) |





12. | MOTORISED KANA PERLA WHITE |

Softcell Pleated & Softcell blinds can seamlessly integrate with innovative and smart home appliances to revolutionise how you manage light and privacy. When blinds are motorised and connected with smart home devices, they create safe, comfortable and a more energy efficient environment. Combining Fabric Box Pleated & Softcell fabrics with Cruze® or Somfy® motors enables technology to be seamlessly integrated into homes.



somfy.



THE FABRIC BOX

PERFECT FIT

Perfect Fit™ offers a quick and easy installation, ensuring your blinds fit seamlessly into your window or door, enhancing your privacy and boosting home insulation.





13. HUDSON SLATE



The unique design of Perfect Fit™ provides enhanced energy efficiency properties, as the cellular or pleated fabric sits within the frame preventing cool air entering and warm air escaping from the room. Available as tensioned top down bottom up and bottom up control only.



THE FABRIC BOX

CHILD SAFETY

Safety is of paramount importance in the home, ensuring the potential hazards posed by unrestrained cords and chains are understood and eliminated.





14. | KANA MERLOT |

With the Fabric Box Pleated and Softcell Collection, you can be confident that your product choice meets legislation EN13120. Every blind is carefully considered ensuring that child safety is an essential feature. Through choosing a tensioned operating system or motorisation, free hanging cords are eliminated making these blinds safe by design and allowing for extra peace of mind.







